



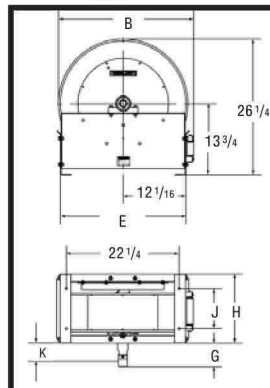
E9350 OLPBW

Made in USA

Hose Guide Roller Position



A suffix code (see diagram) must be added after the model # to specify desired position. Reels are shipped in the BW position unless specified otherwise. FF 95/9600 in BW only.



DIMENSIONS

	E9000	FE9000	FF9000	D9000	D9399 D9305
	in / mm	in / mm	in / mm	in / mm	in / mm
B	26 1/4 667	26 1/4 667	26 1/4 667	26 1/8 664	26 1/8 664
E	24 1/8 613	24 1/8 613	24 1/8 613	24 1/8 613	24 1/4 616
G	2 51	6 1/8 156	3 15/16 100	4 7/16 113	4 9/16 116
H	17 11/16 449	17 11/16 449	17 11/16 449	12 305	13 5/16 338
J	13 7/16 341	13 7/16 341	13 7/16 341	17 11/16 449	17 11/16 449
K	1 1/4 32	3 3/4 95	2 3/4 70	4 102	4 102

Four 7/16" (11.2mm) diameter mounting holes.

For additional models, visit www.reelcraft.com

MODELS WITH HOSE

HOSE CAPACITY

MODELS WITHOUT HOSE

MODEL	WEIGHT lbs / kg	PRESSURE psi / bar	I.D. in / mm	O.D. in / mm	(M)NPTF OUTLET in	(F)NPTF INLET in	LENGTH ft / m	MODEL	WEIGHT lbs / kg	PRESSURE psi / bar
LOW PRESSURE AIR/WATER REELS Maximum Temperature 150° F (65° C)										
E9299 OLP	127 58	300 21	1/2 13	.844 21	1/2	1/2	100 30	E9200 OLP	115 52	500 35
E9350 OLP	140 64	250 17	3/4 19	1.188 30	3/4	3/4	50 15	E9300 OLP	115 52	500 35
FE9350 OLP*	140 64	50 3	3/4 19	1.188 30	3/4	3/4	50 15	FE9300 OLP	115 52	500 35
E9375 OLP	152 69	250 17	3/4 19	1.188 30	3/4	3/4	75 23	E9300 OLP	115 52	500 35
D9399 OLPBW	143 65	250 17	3/4 19	1.188 30	3/4	3/4	100 30	D9305 OLPBW	113 51	500 35
E9450 OLP	157 71	250 17	1 25	1.500 30	3/4	1	50 15	E9400 OLP	115 52	500 35
FE9450 OLP*	157 71	50 3	1 25	1.500 30	3/4	1	50 15	FE9400 OLP	115 52	500 35
NOT AVAILABLE WITH HOSE			1 1/4 32	1.750 44	1 1/4	1 1/2	50 15	FF9500 OLPBW	125 57	600 41
NOT AVAILABLE WITH HOSE			1 1/2 38	2.000 51	1 1/2	1 1/2	50 15	FF9600 OLPBW	125 57	600 41
MEDIUM PRESSURE OIL REELS Maximum Temperature 210° F (99° C)										
E9275 OMP	131 59	2000 138	1/2 13	.815 21	1/2	1/2	75 23	E9200 OMP	117 53	3000 207
E9350 OMP	142 64	1250 86	3/4 19	1.188 30	3/4	3/4	50 15	E9300 OMP	117 53	3000 207
HIGH PRESSURE GREASE REELS Maximum Temperature 210° F (99° C)										
E9175 OHP	153 69	4000 276	3/8 10	.750 19	1/2	3/8	75 23	E9100 OHP	118 54	5000 345

*Models equipped with fuel grade hose. UL330 and VLC approved hose. 250 PSI minimum burst (17 Bar) Low pressure reels furnished standard with PVC hose. Medium pressure reels are furnished standard with S.A.E. 100 R1T one wire braid hose. High pressure reels furnished standard with SAE 100R2T two wire braid hose suitable for grease applications only. For all metric thread connections over 1/2" add the suffix number 70 to indicate BSPT threads - example E9300 OLP70. FF9500 and FF9600 models will have BSPP threads. **Note: To specify our lighter duty model, change prefix from E to D. Not available on FE9500 or FE9600. Modification** - Reels without hose can be modified to handle gasoline and diesel fuel, to order place prefix "F" before model number - example (FF9300 OLP). See Page 47 for inlet hose assemblies and adjustable bumper stops.

NEW